



Universal Register



Key Benefits

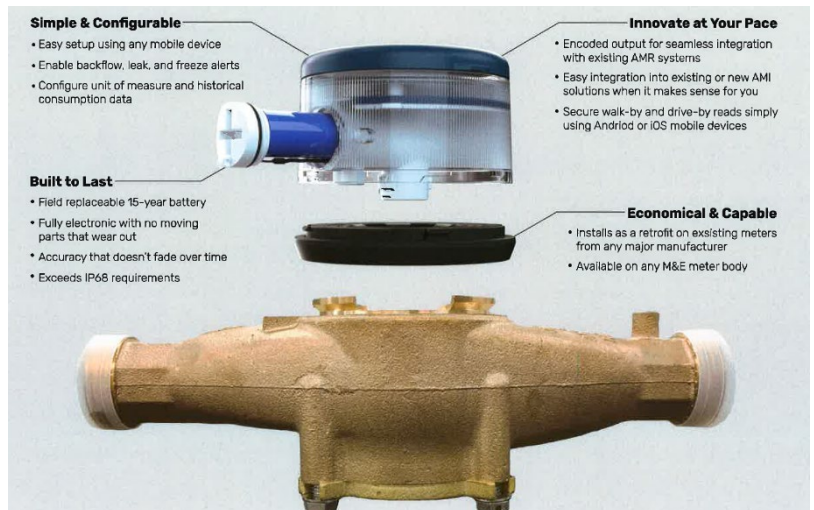
- ✓ Broad compatibility with existing meters and infrastructure
- ✓ Accuracy that doesn't fade over time
- ✓ Retrofittable on existing meters

Options for Growth

- ✓ Encoded output for seamless integration with existing AMR/AMI systems
- ✓ Walk-by, drive-by, and fixed network solutions

Built to Last

- ✓ Fully electronic with no moving parts that wear out
- ✓ Field replaceable 15-year battery
- ✓ Exceeds IP68 requirements



Next Register is a universal and fully programmable register that can be retrofitted on most water meters in use today. Retrofit to your existing: Badger, Master Meter, Elster AMCO plus others.....



Next Register™ (NR4)



An Intelligent Integration Solution

The Next Register is a universal and fully programmable register that can be retrofitted on most water meters in use today. Through precisely reading the magnetic signature within existing mechanical meters the Next Register converts a traditional system into a smart, plug-n-play solution without the need to remove the existing meters.

With the Next Register, utilities can now easily benefit from flexible connectivity and data communications. The interoperable encoded output, BLE powered walk-by/drive-by, and built in RF capability allow the Next Register to tie directly into an existing AMI solution or start with a basic AMR system and scale over time.

The powerful and intuitive mobile application allows you to both program as well as collect reads from the Next Register without the need of additional costly equipment. This facilitates utilities to both reduce expenses while increasing the efficiency of daily operations.

Key Benefits

- Broad compatibility with existing meters and infrastructure
- Accuracy that doesn't fade over time
- Retrofittable on existing meters

Options for Growth

- Encoded output for seamless integration with existing AMR/AMI systems
- Walk-by, drive-by, and fixed network solutions

Built to Last

- Fully electronic with no moving parts that wear out
- Field replaceable 15-year battery
- Exceeds IP68 requirements

Configure with Ease

- Direct configure using any modern iOS or Android device
- Enable backflow, leak, and freeze alerts



GENERAL SPECIFICATIONS

Approvals

Complies with part 15 of the FCC rules

Complies with National Type Evaluation Program (NTEP)

Wireless

Built-in BLE communication for configuration and walk-by reading option.

Integrated long range 902-928 MHz RF option for drive by and fixed network read collection options.

Meter Compatibility

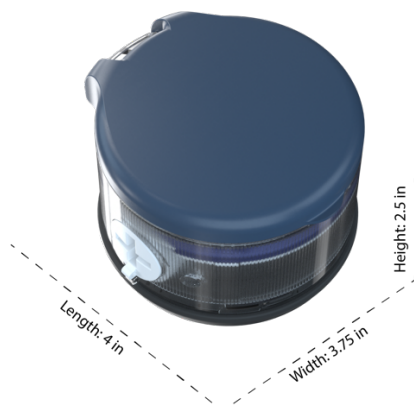
Pairs with most modern mechanical meter body types including positive displacement (PD), multi-jet (MJ), and turbine.

Integration adapter and seal included to ordering specification. Ask your distributor for details.

Battery

Anti-obsolescence: battery replaced instead of discarding
CR18505 lithium primary battery
15-year estimated battery life

Reference Dimensions



Operating Environment

IP 68 for submersed applications

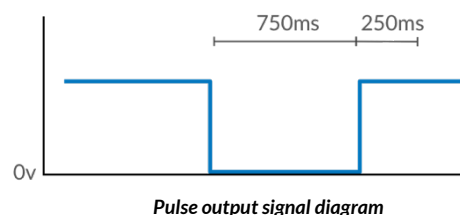
Temperature min -20°C / -4°F

Temperature max 60°C / 140°F

OUTPUTS FOR 3RD PARTY INTEGRATIONS

Pulse Output

Clean solid state driven 750ms pulse output open-drain signal. Min 3vdc /Max 15vdc.



Encoded Output

Wired encoded output can be used with any 3rd party transmitters* or reading devices that support the encoded protocols listed below.

- Neptune 3-wire (8 digit extended)
- AMCO/Elster 3-wire
- Sensus 3-wire / 2-wire touchpad

**Some 3rd Party transmitters may not actively relay optional alerts. Alerts are still logged and can be retrieved with direct reading.*

NEXT REGISTER™ AMR/AMI OPTIONS

Walk-by Wireless Reading

Authorized meter readers to collect near-proximity wireless reads using the Next Meters mobile app.

Drive-by Wireless Reading

The Next Meters mobile app facilitates easy read collection when paired with the range-extending antenna in any vehicle.

Municipal Fixed Wireless

A continuous stream of usage data is made available with the fixed wireless solution. Solar powered network nodes are added to service large zones of a city or region.

Submetering Fixed Wireless

The NCSS™ fixed wireless option allows integration with the NextCentury submetering line of products for indoor monitoring of dense meter points found in apartments, high-rises, and commercial units.

CONFIGURATION

Direct Connection to Register

Using the Next Meters mobile app available for iOS or Android, a technician can directly connect to the register to configure the output type, billing digits, and unit of measure.

How To Enter Configuration Mode

Open the Next Meters mobile app on your device

Navigate to the Connect tool

Swipe a magnet past the activation zone on the register

The register will appear on the screen and can be selected

The current configuration will display with the option to customize as needed



Magnet swipe area on the face of the register

Applying Changes

After desired configuration changes, select Save

The app will prompt you to swipe the magnet again

Swiping the magnet will apply the changes and return the register to an active status ready for use

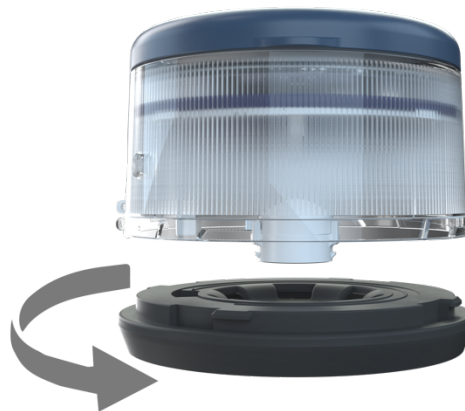
MOUNTING THE NEXT REGISTER™

Retrofit Adapter Plates

Retrofit adapter plates are available for most meter body styles. The adapter type can be specified when ordering and can be changed at any time during the Next Register's lifespan. Please contact your distributor for more information.

Attaching the Adapter Plate

To install the register, simply thread the adapter ring onto the bottom of the register. The two parts will click into place when secure.



Attaching adapter plate to the register

Mounting to Meter Body

Orient the register to the desired viewing angle

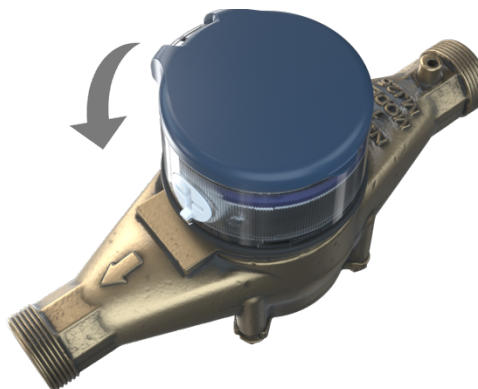
Set the register into the meter body mounting bracket

Rotate clockwise approximately 1/8th turn

Verify the LCD is facing the desired direction

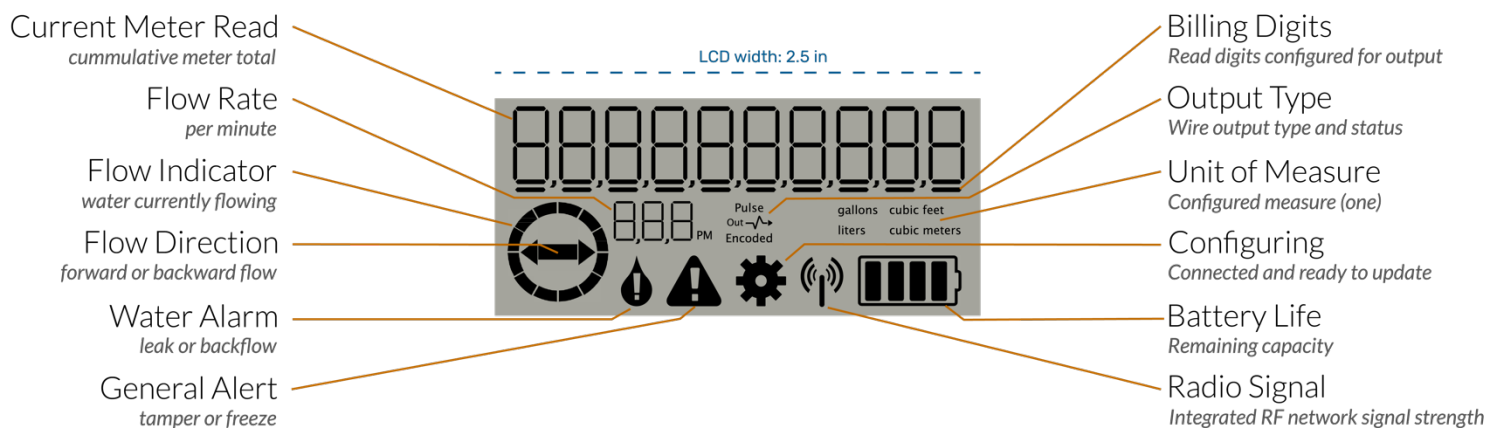
Insert the security pin into the adapter plate

Press in until flush and secure



Attaching register to the meter with 1/8 turn

LCD DISPLAY



BATTERY REPLACEMENT

Battery cap can be removed with a large screwdriver
 Rotate counterclockwise to remove the battery cap
 Pull the battery from the compartment
 Disconnect the battery connector
 Connect new battery
 Place battery back into compartment
 Replace the battery cap, and rotate clockwise until alignment arrows meet



CONTACT INFORMATION

Next Meters, LLC
info@nextmeters.com
www.nextmeters.com



Warranty

Next Meters Data Gathering System Warranty

1| Scope of Warranty

Next Meters warrants that all communication equipment manufactured by Next Meters will be free from defects in materials and workmanship under normal use and in accordance with Next Meters' documented installation and operating procedures for a period of three (3) years from the date of manufacture.

Products not manufactured by Next Meters, including without limitation, accessories, attachments, or replaceable batteries used in conjunction with Next Meters equipment are only warranted, if at all, by the original manufacturer. Next Meters' warranties do not include replacement of batteries used to power Next Meter products.

2| Limits of Liability

This warranty only applies to Read Management System components produced by Next Meters and does not cover any products which have been damaged by abuse, negligence, vandalism, acts of God, excessive operating conditions, normal wear and tear, unauthorized attachments or modifications, or other actions or events beyond Next Meters' reasonable control. This warranty will be nullified and voided if products are placed in non-recommended installation application/fashion, or are converted, altered, or treated by other than Next Meters recommended procedures and instructions, or are read by equipment not approved by Next Meters.

Next Meters' sole liability and customer's exclusive remedy under this warranty are expressly limited to repair or replacement of the product at Next Meters' option and is conditioned upon the customer returning the product(s) to the location designated by Next Meters within the warranty periods or limits stated herein, and pre-paying the freight costs both to and from specified location. In no event shall Next Meters be liable for costs or expenses associated with the removal or installation of products under this warranty.

NEXT METERS SHALL HAVE NO LIABILITY OR RESPONSIBILITY TO THE PURCHASER OR ANY THIRD PARTY FOR ANY LOSS, COST, EXPENSE, DAMAGE, OR LIABILITY, WHETHER DIRECT OR INDIRECT, OR FOR SPECIAL, INCIDENTAL, INDIRECT, OR CONSEQUENTIAL DAMAGES OF ANY KIND, REGARDLESS OF WHETHER SUCH LIABILITY IS BASED ON BREACH OF CONTRACT, TORT, STRICT LIABILITY, BREACH OF WARRANTIES, OR OTHERWISE, AND EVEN IF ADVISED OF THE LIKELIHOOD OF SUCH DAMAGES. INCIDENTAL AND

CONSEQUENTIAL DAMAGES INCLUDE, BUT ARE NOT LIMITED TO, LOST REVENUE, LOSS OF PROFITS, DATA, BUSINESS, OR GOODWILL. NEXT METERS LIABILITY SHALL UNDER NO CIRCUMSTANCES EXCEED THE ACTUAL AMOUNT PAID BY THE PURCHASER FOR THE DEFECTIVE PRODUCT. IN ADDITION, DAMAGES RESULTING FROM NEGLIGENCE ON THE PART OF THE PURCHASER OR OTHER THIRD PARTY, INCLUDING, BUT NOT LIMITED TO, THE CARE AND MAINTENANCE OF NEXT METERS PRODUCTS, OR DAMAGES RESULTING FROM NEGLIGENCE REGARDING PERIODIC TESTING OF THE PRODUCT'S PERFORMANCE, ARE NOT COVERED UNDER THIS GUARANTEE.

CHANGES OR MODIFICATIONS NOT EXPRESSLY APPROVED BY NEXT METERS MAY VOID THIS WARRANTY AND THE USER'S AUTHORITY TO OPERATE THE EQUIPMENT.

THE FOREGOING WARRANTY IS THE SOLE AND EXCLUSIVE REMEDY AVAILABLE TO THE PURCHASER AND IS IN LIEU OF ALL OTHER WARRANTIES, GUARANTEES, OR REMEDIES, WHETHER WRITTEN OR ORAL, EXPRESSED, OR IMPLIED, INCLUDING WITHOUT LIMITATION, THE IMPLIED WARRANTIES OF MERCHANTABILITY, FITNESS FOR A PARTICULAR PURPOSE, AND NON-INFRINGEMENT, ALL OF WHICH NEXTCENTURY HEREBY EXPRESSLY DISCLAIMS.

SOME STATES DO NOT ALLOW THE EXCLUSION OR LIMITATION OF INCIDENTAL OR CONSEQUENTIAL DAMAGES, SO THE ABOVE LIMITATION OR EXCLUSION MAY NOT APPLY TO YOU.

3| Contact Information

If there are any questions or concerns related to these guidelines, please contact Next Meters Product Support:

- Phone: (435) 994.8743
- Email: support@nextmeters.com

